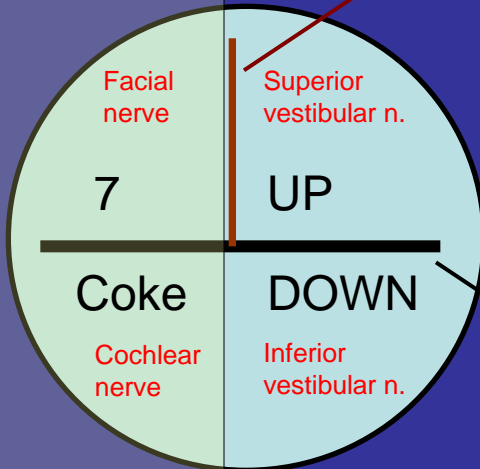


IAC (in cross section)

“Seven Up, Coke Down”



Bill's Bar

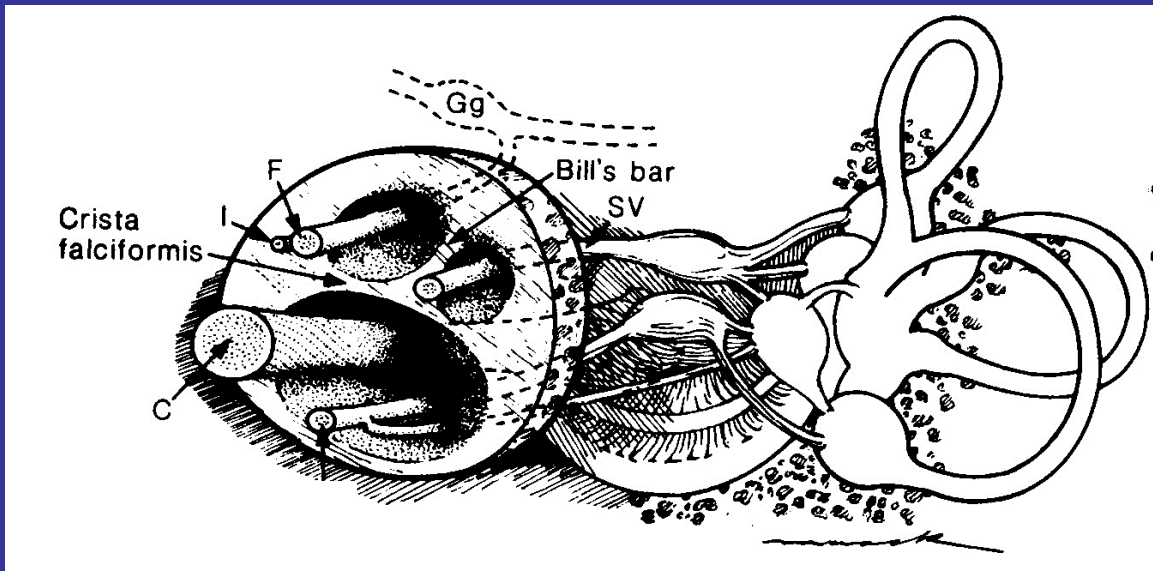


For Bill's Bar, I always think of Bill Nye the Science Guy. Look what an elongated, vertical head this freak of nature has. For some reason I always think of his hair popping up like the Go-Daddy logo, vertically like that. Haha. Anyway. Bill's Bar is VERTICAL.

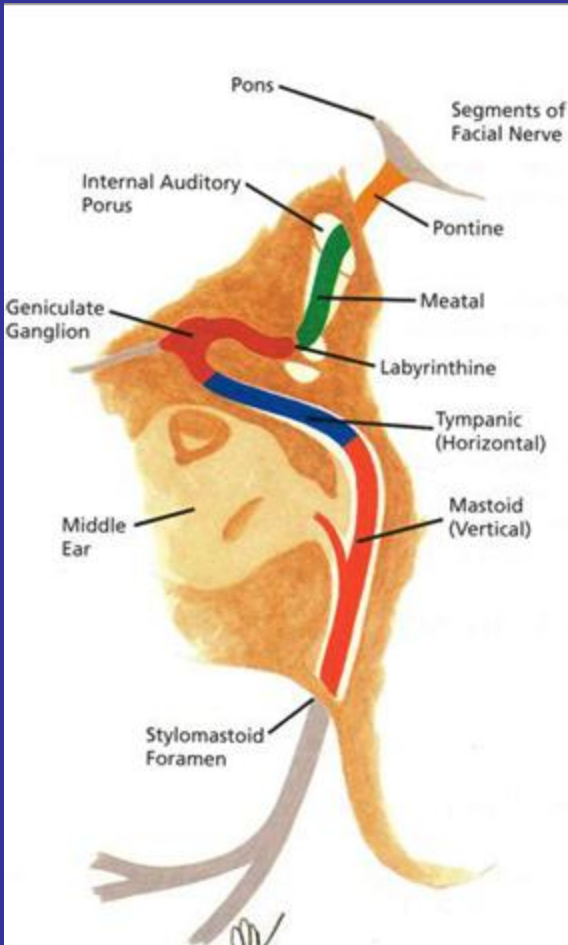
ANTERIOR

POSTERIOR

Crista Falciformis



Facial Nerve Anatomy



General scheme for the course of the facial nerve:

Nerve comes off laterally from pons, then courses in 7 classic segments depending on where it is:

- Cisternal (aka pontine)
- Intracanalicular (aka meatal)
- Labyrinthine
- Geniculate ganglion
- Tympanic (horizontal segment)
- Mastoid (vertical segment)
- Extracranial (trans parotid) after exit through the stylomastoid foramen

Important to remember you should never have avid enhancement in the intracanalicular or labyrinthine segments of the facial nerve (you might have MILD); if they enhance brightly, think of some inflammatory process like Bell's Palsy or Ramsay Hunt.

Facial nerve branches & functions:

- Lacrimation (Greater petrosal nerve)
- Acoustic dampening (stapedius branch)
- Taste (chorda tympani) – innervates ANTERIOR 2/3 of the tongue. Remember the posterior 1/3 is from CN IX (glossopharyngeal)
- Muscles of facial expression

